

# Opposing Age-Related Trends in Absolute and Relative Risk of Adverse Health Outcomes Associated With Out-of-Office Blood Pressure

Yan Li, Lutgarde Thijs, Zhen-Yu Zhang, Kei Asayama, Tine W. Hansen, José Boggia, Kristina Björklund-Bodegård, Wen-Yi Yang, Teemu J. Niiranen, Angeliki Ntineri, Fang-Fei Wei, Masahiro Kikuya, Takayoshi Ohkubo, Eamon Dolan, Atsushi Hozawa, Ichiro Tsuji, Katarzyna Stolarz-Skrzypek, Qi-Fang Huang, Jesus D. Melgarejo, Valérie Tikhonoff, Sofia Malyutina, Edoardo Casiglia, Yuri Nikitin, Lars Lind, Edgardo Sandoya, Lucas Aparicio, Jessica Barochiner, Natasza Gilis-Malinowska, Krzysztof Narkiewicz, Kalina Kawecka-Jaszcz, Gladys E. Maestre, Antti M. Jula, Jouni K. Johansson, Tatiana Kuznetsova, Jan Filipovský, George Stergiou, Ji-Guang Wang, Yutaka Imai, Eoin O'Brien, Jan A. Staessen, On behalf of the International Database on Ambulatory and Home Blood Pressure in Relation to Cardiovascular Outcome Investigators\*

**Abstract**—Participant-level meta-analyses assessed the age-specific relevance of office blood pressure to cardiovascular complications, but this information is lacking for out-of-office blood pressure. At baseline, daytime ambulatory (n=12624) or home (n=5297) blood pressure were measured in 17921 participants (51.3% women; mean age, 54.2 years) from 17 population cohorts. Subsequently, mortality and cardiovascular events were recorded. Using multivariable Cox regression, floating absolute risk was computed across 4 age bands ( $\leq 60$ , 61–70, 71–80, and  $> 80$  years). Over 236491 person-years, 3855 people died and 2942 cardiovascular events occurred. From levels as low as 110/65 mmHg, risk log-linearly increased with higher out-of-office systolic/diastolic blood pressure. From the youngest to the oldest age group, rates expressed per 1000 person-years increased ( $P < 0.001$ ) from 4.4 (95% CI, 4.0–4.7) to 86.3 (76.1–96.5) for all-cause mortality and from 4.1 (3.9–4.6) to 59.8 (51.0–68.7) for cardiovascular events, whereas hazard ratios per 20-mmHg increment in systolic out-of-office blood pressure decreased ( $P \leq 0.0033$ ) from 1.42 (1.19–1.69) to 1.09 (1.05–1.12) and from 1.70 (1.51–1.92) to 1.12 (1.07–1.17), respectively. These age-related trends were similar for out-of-office diastolic pressure and were generally consistent in both sexes and across ethnicities. In conclusion, adverse outcomes were directly associated with out-of-office blood pressure in adults. At young age, the absolute risk associated with out-of-office blood pressure was low, but relative risk high, whereas with advancing age relative risk decreased and absolute risk increased. These observations highlight the need of a lifecourse approach for the management of hypertension. (*Hypertension*. 2019;74:1333-1342. DOI: 10.1161/HYPERTENSIONAHA.119.12958.) • [Online Data Supplement](#)

**Key Words:** blood pressure ■ blood pressure monitoring ■ ambulatory ■ cardiovascular diseases ■ hypertension ■ mortality

Received March 6, 2019; first decision March 26, 2019; revision accepted September 10, 2019.

Center for Epidemiological Studies and Clinical Trials and Center for Vascular Evaluations, Shanghai Institute of Hypertension, Shanghai Key Laboratory of Hypertension, Ruijin Hospital, Shanghai Jiaotong University School of Medicine, China (Y.L., Q.-F.H., J.-G.W.); Research Unit Hypertension and Cardiovascular Epidemiology, KU Leuven Department of Cardiovascular Sciences, University of Leuven, Belgium (L.T., Z.-Y.Z., W.-Y.Y., F.-F.W., T.K., J.A.S.); Department of Hygiene and Public Health, Teikyo University School of Medicine, Tokyo, Japan (K.A., M.K., T.O.); Tohoku Institute for Management of Blood Pressure (K.A., T.O., Y.I.); Steno Diabetes Center Copenhagen, Gentofte, and Research Centre for Prevention and Health, Capital Region of Denmark, Denmark (T.W.H.); Centro de Nefrología and Departamento de Fisiopatología, Hospital de Clínicas, Universidad de la República, Montevideo, Uruguay (J.B.); Division of Cardiovascular Medicine, Department of Clinical Sciences, Danderyd Hospital, Karolinska Institutet, Stockholm, Sweden (K.B.B.); National Institute for Health and Welfare, Turku, Finland (T.J.N., A.M.J., J.K.J.); Department of Medicine, Turku University Hospital and University of Turku, Finland (T.J.N.); Hypertension Center STRIDE-7, National and Kapodistrian University of Athens, School of Medicine, Third Department of Medicine, Sotiria Hospital, Greece (A.N., G.S.); Stroke and Hypertension Unit, Blanchardstown, Dublin, Ireland (E.D.); Department of Preventive Medicine and Epidemiology, Tohoku Medical Megabank Organization, Tohoku University, Sendai, Japan (A.H.); Department of Public Health, Tohoku University Graduate School of Medicine, Sendai, Japan (I.T.); First Department of Cardiology, Interventional Electrophysiology and Hypertension, Jagiellonian University Medical College, Kraków, Poland (K.S.-S., K.K.J.); Laboratorio de Neurociencias and Instituto Cardiovascular, Universidad del Zulia, Maracaibo, Venezuela (J.D.M.-A., G.E.M.); Departments of Neuroscience and Human Genetics, University of Texas Rio Grande Valley, Brownsville, TX (G.E.M.); Department of Medicine, University of Padova, Italy (V.T., E.C.); Institute of Internal and Preventive Medicine, Internal and Preventive Medicine - Branch of the Institute of Cytology and Genetics, Siberian Branch of the Russian Academy of Science, Novosibirsk, Russian Federation (S.M., Y.N.); Department of Public Health and Caring Sciences, Section of Geriatrics, Uppsala University, Sweden (L.L.); Asociación Española Primera de Socorros Mutuos, Montevideo, Uruguay (E.S.); Department of Medicine, Hospital Italiano de Buenos Aires, University of Buenos Aires, Argentina (L.A., J.B.); Department of Hypertension, Medical University of Gdańsk, Poland (N.G.M., K.N.); Faculty of Medicine, Charles University, Pilsen, Czech Republic (J.F.); Conway Institute, University College Dublin, Ireland (E.O.B.); and Cardiovascular Research Institute Maastricht (CARIM), Maastricht University, The Netherlands (J.A.S.)

This paper was sent to David A. Calhoun, Guest Editor, for review by expert referees, editorial decision, and final disposition.

\*A list of IDACO and IDHOCO investigators are listed in the online-only Data Supplement.

The online-only Data Supplement is available with this article at <https://www.ahajournals.org/doi/suppl/10.1161/HYPERTENSIONAHA.119.12958>.

Correspondence to Jan A. Staessen, Studies Coordinating Centre, Research Unit Hypertension and Cardiovascular Epidemiology, KU Leuven Department of Cardiovascular Sciences, University of Leuven, Campus Sint Rafaël, Kapucijnenvoer 35, Box 7001, BE-3000 Leuven, Belgium. Email [jan.staessen@med.kuleuven.be](mailto:jan.staessen@med.kuleuven.be)

© 2019 American Heart Association, Inc.

*Hypertension* is available at <https://www.ahajournals.org/journal/hyp>

DOI: 10.1161/HYPERTENSIONAHA.119.12958

High blood pressure (BP) is the major driver of cardiovascular complications.<sup>1-3</sup> Several studies established that out-of-office BP, measured by ambulatory<sup>4,5</sup> or home<sup>6</sup> monitoring is a better predictor of mortality and cardiovascular complications than office BP is. The 2017 American College of Cardiology/American Heart Association guideline for the management of hypertension<sup>7</sup> and other directives<sup>8,9</sup> recommended that for the proper diagnosis and management of hypertension out-of-office BP measurement is a prerequisite. To evaluate the prognostic accuracy of out-of-office BP measurement, our consortium set up the International Databases on Ambulatory (IDACO)<sup>10</sup> and Home (IDHOCO)<sup>11</sup> BP in relation to cardiovascular outcome. This resource is a powerful instrument to assess the relevance of out-of-office BP in a wide array of circumstances, as previously done for office BP as predictor of cardiovascular mortality and morbidity.<sup>1-3</sup> To our knowledge, a similar analysis has never been undertaken for out-of-office BP, including both ambulatory and home BP. Hence, by combining individual participant data from longitudinal population studies, the objective of the present meta-analysis was to characterize the age- sex- and ethnicity-specific relevance of out-of-office BP to the subsequent incidence of mortality and fatal and nonfatal cardiovascular events.

## Methods

The data that support the findings of this study are available from the corresponding author on reasonable request.

### Study Participants

All cohort studies complied with the Declaration of Helsinki for research in humans,<sup>12</sup> received ethical approval from the competent Institutional Review Boards, and included randomly recruited participants from populations or communities. All participants provided informed written consent. Cohort studies qualified for inclusion, if information on office and out-of-office BP and cardiovascular risk factors was available at baseline, if follow-up included both fatal and nonfatal events, and if study reports had been published in peer-reviewed articles.<sup>10,11</sup> The Appendix in the online-only Data Supplement available with the full text of this article at <http://hyper.ahajournals.org> provides further cohort-specific information on the catchment areas, sampling strategies, recruitment, participation rate, and the number of participants enrolled and analyzed, separately for IDACO (Table S1 in the online-only Data Supplement) and IDHOCO (Table S2).

The IDACO database included 13654 participants from 13 cohort studies,<sup>13-22</sup> who had their ambulatory BP measured (Figure 1). IDHOCO involved 7571 participants from 7 studies,<sup>6,17,23-25</sup> who had measured their home BP (Figure 1). We excluded participants from analysis, if they were younger than 18 years (n=314), if their in-office BP had not been measured (n=504), or if they had fewer than 10 daytime ambulatory BP readings (n=176) or fewer than 2 home BP measurements (n=18). We also excluded 702 Ohasama participants with incomplete identification, precluding an error-free merging of IDACO and IDHOCO data. In 1590 participants, who underwent both ambulatory and home BP monitoring, we used daytime ambulatory BP as out-of-office BP. Finally, 4 data sets were available for the statistical analysis (Figure 1): group A consisted of 17921 participants whose out-of-office BP was based on their daytime ambulatory BP (n=12624) or on their self-measured home BP (n=5297); group B included 12624 participants with daytime ambulatory BP; group C included 6887 participants with home BP; and group D 10864 participants, who in addition to at least 10 daytime BP readings also had 5 or more nighttime ambulatory BP readings, allowing an analysis of the 24 hour and nighttime BP (Figure 1).

### Blood Pressure Measurement

Portable monitors were programmed to obtain ambulatory BP readings at 30-minute intervals throughout the whole day,<sup>14,21</sup> or at intervals ranging from 15<sup>13</sup> to 30<sup>16</sup> minutes during daytime and from 30<sup>13</sup> to 60<sup>16</sup> minutes at night (Table S3). The same macros written in Statistical Analysis System code processed all ambulatory and home BP recordings. While accounting for the daily activities of the participants documented by diaries in 64.1% of IDACO participants<sup>26</sup> and as consistently done in all IDACO articles published since 2007,<sup>4</sup> we defined daytime as the interval from 10:00 to 20:00 hours in Europeans and South Americans, and from 08:00 to 18:00 hours in Asians. The corresponding nighttime intervals ranged from midnight to 06:00 h and from 22:00 to 04:00 hours, respectively. Within individual subjects, we weighted the means of the ambulatory BP by the time interval between readings. This gives a weight to each individual BP readings in a recording proportional to the preceding time interval.<sup>27</sup> Participants measured their home BP after 5 minutes of rest in the sitting position over periods ranging from a single day<sup>17</sup> up to 30 days<sup>25</sup> (Table S4). All devices used for ambulatory (Table S3) or home (Table S4) BP measurement had passed validation, using established protocols, and were fitted to an upper-arm cuff with an appropriate size for each participant's arm circumference.

### Ascertainment of Events

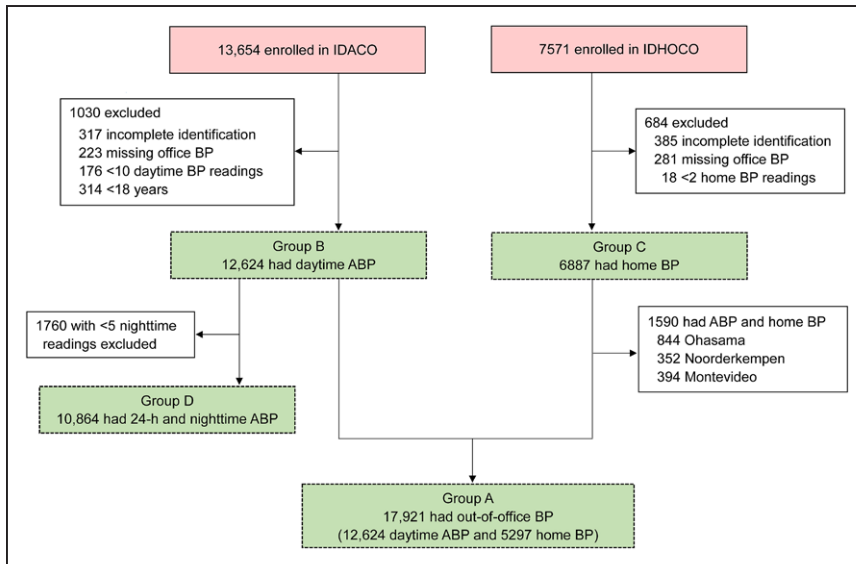
We ascertained vital status and the incidence of fatal and nonfatal diseases from the appropriate sources in each country, as described in previous IDACO<sup>10</sup> and IDHOCO<sup>11</sup> publications. Outcomes were coded according to various versions of the International Classification of Diseases. Events of major interest were total mortality and a composite cardiovascular outcome consisting of cardiovascular mortality combined with nonfatal coronary events, heart failure and stroke. Other events were cardiovascular mortality (ICD8 390-448, ICD9 390.0-459.9, and ICD10 I00-I79 and R96), coronary events (death from ischemic heart disease (ICD8 411-412, ICD9 411 and 414, and ICD10 I20, I24-I25), sudden death (ICD8 427.2 and 795, ICD9 427.5 and 798, and ICD10 I46 and R96), nonfatal myocardial infarction (ICD8/9 410 and ICD10 I21-I22), and coronary revascularization), and stroke (ICD8/9 430-434 and 436, ICD10 I60-I64 and I67-I68), not including transient ischemic attack. Heart failure (ICD8 428, 427.0, 427.1, 427.2, 429, 5191, and 78214, ICD9 429, and ICD10 I50 and J81) was included in the composite cardiovascular end point. Its diagnosis required hospitalization in the Scandinavian cohorts.<sup>13,16</sup> In the other cohorts, heart failure was either a clinical diagnosis or the diagnosis on the death certificate. All events were validated against hospital files or medical records held by primary care physicians or specialists. In all outcome analyses, we only considered the first end point within each category. No participant was lost to follow-up.

### Statistical Analysis

For database management and statistical analysis, we used the SAS system, version 9.4, maintenance level 5 (SAS Institute, Inc, Cary, NC). Means were compared using the large-sample z-test and proportions by Fisher exact test. We computed the 95% CIs of rates as  $R \pm 1.96 \times \sqrt{(R/T)}$ , where R and T are the rate and the denominator used to calculate the rate.

Information on serum cholesterol level was not available for the Didima cohort<sup>24</sup> and was, as in previous publications,<sup>28</sup> extrapolated from data stratified by sex and 10-year age bands from the ATTICA population study,<sup>29</sup> which took place at the same time and in the same geographic area as the Didima study. Furthermore, after stratification for cohort and sex, we interpolated missing values of body mass index (n=310) and serum cholesterol (n=942) from the regression slopes on age. In participants with unknown status for smoking (n=205), drinking (n=2024), antihypertensive treatment (n=39), diabetes mellitus (n=4), or history of cardiovascular disease (n=2), we set the design variable to the cohort- and sex-specific mean of the codes (0, 1).

We determined hazard ratios from Cox models stratified by cohort, using the strata option implemented in the PHREG procedure of the SAS software, and adjusted for sex, age, body mass index, serum cholesterol, smoking and drinking, antihypertensive drug treatment



**Figure 1.** Flow chart. In 1590 participants, who had both daytime and home BP measured, daytime blood pressure (BP) was analyzed as out-of-office BP. Of 12 624 participants with daytime BP, 10 864 had  $\geq 5$  nighttime BP readings and were included in the analysis for 24-h and nighttime BP. ABP indicates ambulatory blood pressure; IDACO, International Database on Ambulatory Blood Pressure in Relation to Cardiovascular Outcome<sup>10</sup>; and IDHOCO International Database of Home Blood Pressure in Relation to Cardiovascular Outcome.<sup>11</sup>

and history of diabetes mellitus, and cardiovascular disease. While stratifying for cohort, we pooled participants recruited in the framework of the European Project on Genes in Hypertension (Novosibirsk, Kraków, Gdańsk, Pilsen, and Padova).<sup>20</sup> Taking into account the incidence of events over the age and BP ranges, we considered 4 age groups ( $\leq 60$ , 61–70, 71–80, and  $> 80$  years) and 5 BP categories. For daytime, home and 24-h ambulatory BP, the categories were  $< 120$ , 120–129, 130–139, 140–149, and  $\geq 150$  mmHg systolic and  $< 70$ , 70–74, 75–79, 80–84, and  $\geq 85$  mmHg diastolic. For the nighttime ambulatory BP, the categories were  $< 110$ , 110–119, 120–129, 130–139, and  $\geq 140$  mmHg systolic and  $< 60$ , 60–64, 65–69, 70–74, and  $\geq 75$  mmHg diastolic. For analysis of systolic and diastolic BP, this yielded each time 20 groups, of which the youngest with the lowest BP was taken as reference with a hazard ratio of 1.0. Relative to this, the 19 other hazard ratios associated with BP were estimated simultaneously by Cox regression. This approach allows assigning an error term to each hazard ratio, including that of the reference group and avoids any assumption to be made as to whether the proportional risks associated with BP differ according to age group. Collectively, the 20 hazard ratios are all related to the absolute event rate in the study population by some common constant of proportionality and were presented as floating absolute risks.<sup>30</sup> We checked the proportional hazards assumption and the functional forms of the covariables by the Kolmogorov-type supremum test. We applied the Lexis expansion<sup>31</sup> for age in Cox regression, which converts 1 observation per subject (age at entry) into several observations of different age-at-risk bands. This approach allows adjusting for attained age at risk rather than for age at entry. We compared hazard ratios between sexes and ethnic groups, using a normal approximation of the log-transformed point estimates and standard errors. Finally, using Cox regression, we expressed the risks of adverse health outcomes associated with BP for 20 and 10 mmHg increments in systolic and diastolic BP, respectively.

## Results

### Baseline Characteristics

Of 17 921 participants, 12 624 had their out-of-office BP assessed by daytime ambulatory monitoring and 6 887 by self-measurement at home (Table 1). According to ethnicity, 22.2% were Chinese ( $n=880$ ) or Japanese ( $n=3091$ ), 62.3% were Eastern Europeans (Czech Republic, Poland, and Russian Federation;  $n=1082$ ), Western Europeans (Belgium, Greece, Ireland, and Italy;  $n=4579$ ) or Scandinavians (Denmark, Finland, and Sweden;  $n=5505$ ), and 15.5% were South

Americans mainly of European ancestry (Argentina, Uruguay, and Venezuela;  $n=2784$ ). About half of the study population (51.3%) was female.

In the 17 921 participants with either daytime ( $n=12 624$ ) or home ( $n=5 297$ ) BP (group A; Figure 1), mean systolic/diastolic values were 129.3/78.2 mmHg for out-of-office BP, 129.3/78.8 mmHg for daytime BP, and 129.1/76.9 mmHg for home BP. Age at enrollment ranged from 18 to 97 years. Mean values were 54.2 years for age, 25.6 kg/m<sup>2</sup> for body mass index, 5.54 mmol/L for serum cholesterol, and 5.28 mmol/L for blood glucose. For smoking, the prevalence was 25.6%, 46.6% for drinking, and 50.4% for being overweight or obese; 6.7% of participants had diabetes mellitus and 10.6% a history of cardiovascular disease. The characteristics of the cohorts who had their daytime ambulatory BP ( $n=12 624$ ; group B) or home BP ( $n=6 887$ ; group C) measured mirrored those of the overall study population (Figure 1; Table 1). Among 10 864 participants (group D), the 24-hour and nighttime BP averaged 123.9/74.0 and 112.9/65.1 mmHg, respectively (Figure 1; Table 1).

### Quality of the Blood Pressure Measurements

Among IDACO participants, the median number of ambulatory readings averaged to estimate the daytime (group B), nighttime (group D), and 24-hour blood pressure (group D) was 29 (5th–95th percentile interval, 15–41), 11 (6–13), and 56 (35–82), respectively. Similar data are given for each IDACO cohort separately in Table S3 for the 24-hour BP and in Table S5 for the daytime and nighttime BP. In all IDHOCO participants (group C), the median number of home BP readings per individual was 28 (2–56). The corresponding data for each IDHOCO cohort are available in Table S4.

### Incidence of Events

The number of person-years of follow-up totaled 236 491 in 17 921 participants, who had either their daytime or home BP measured (group A). Over a median follow-up of 13.2 years (5th–95th percentile interval, 3.5–24.2), 3855 deaths occurred, of which 1441 (37.4%) were cardiovascular. Of

Table 1. Baseline Characteristics of Cohorts by Type of Blood Pressure Measurement

Characteristic	Cohorts According to Type of out-of-office BP Measurement		
	Daytime BP (Group B)	Home BP (Group C)	Out-of-Office BP (Group A)
Number of Participants (%)			
All participants in category	12 624	6 887	17 921
Ethnicity			
Asian	1 883 (14.9)	2 932 (42.6)	3 971 (22.2)
European	8 368 (66.3)	3 150 (45.7)	11 166 (62.3)
South American	2 373 (18.8)	805 (11.7)	2 784 (15.5)
Women	6 245 (49.5)	3 883 (56.4)	9 186 (51.3)
Smokers	3 484 (27.6)	1 395 (20.3)	4 580 (25.6)
Drinking alcohol	5 946 (47.1)	2 941 (42.7)	8 343 (46.6)
Obesity			
BMI, 25.0–29.9 kg/m <sup>2</sup>	4 455 (35.3)	2 430 (35.3)	6 396 (35.7)
BMI, ≥30.0 kg/m <sup>2</sup>	1 794 (14.2)	1 019 (14.8)	2 632 (14.7)
On antihypertensive drugs	2 315 (18.3)	1 803 (26.2)	3 721 (20.8)
Diabetes mellitus	829 (6.6)	554 (8.0)	1 194 (6.7)
History of cardiovascular disease	1 350 (10.7)	679 (9.9)	1 893 (10.6)
Mean (±SD) of characteristic			
Age, y	51.7±16.1	59.0±14.1	54.2±16.0
Body mass index, kg/m <sup>2</sup>	25.5±4.4	25.7±4.4	25.6±4.4
Office blood pressure			
Systolic, mm Hg	131.9±23.1	134.3±20.2	133.1±22.4
Diastolic, mm Hg	79.7±11.9	79.6±11.6	79.9±11.8
Ambulatory blood pressure			
24-h systolic, mm Hg	123.9±14.4	...	123.9±14.4
24-h diastolic, mm Hg	74.0±8.7	...	74.0±8.7
Daytime systolic, mm Hg	129.3±15.1	...	129.3±15.1
Daytime diastolic, mm Hg	78.8±9.3	...	78.8±9.3
Nighttime systolic, mm Hg	112.9±15.6	...	112.9±15.6
Nighttime diastolic, mm Hg	65.1±9.6	...	65.1±9.6
Home blood pressure			
Systolic, mm Hg	...	127.3±18.1	129.1±18.6
Diastolic, mm Hg	...	76.2±9.9	76.9±9.8
Out-of-office blood pressure			
Systolic, mm Hg	...	...	129.3±16.2
Diastolic, mm Hg	...	...	78.2±9.5
Biochemical measurements			
Serum cholesterol, mmol/L	5.56±1.13	5.41±1.07	5.54±1.12
Blood glucose, mmol/L	5.21±1.46	5.47±1.22	5.28±1.43

Office BP was the average of 2 consecutive readings. In 17 921 participants either daytime BP (n=12 624) or home BP (n=5297) was analyzed as out-of-office BP (Group A). Group C includes 6887 participants with home BP. Of 12 624 participants with daytime BP (Group B), 10 864 had ≥5 nighttime BP readings and were included in the means of 24-h and nighttime BP (Group D). BMI was weight in kilograms divided by the square of height in meters. To convert serum cholesterol from mmol/L to mg/dL multiply by 38.3. Diabetes mellitus was a self-reported diagnosis, a fasting or random blood glucose level of ≥7.0 mmol/L (126 mg/dL) or ≥11.1 mmol/L (200 mg/dL), or use of antidiabetic drugs. BMI indicates body mass index; and BP, blood pressure.

**Table 2. Incidence of Events by Baseline Age in Participants With Daytime or Home Blood Pressure**

Events	Age, y			P Value	
	≤60	61–70	71–80	>80	
Number of participants	10 488	3 436	3 516	481	
<b>Total mortality</b>					
Number of deaths	663	990	1 951	251	
Rate (per 1000 person-years)	4.37 (4.04–4.70)	22.3 (21.0–23.7)	51.9 (49.6–54.1)	86.3 (76.1–96.5)	<0.001
<b>Cardiovascular mortality</b>					
Number of deaths	179	337	804	121	
Rate (per 1000 person-years)	1.18 (1.01–1.35)	7.61 (6.80–8.41)	21.4 (19.9–22.8)	41.6 (34.4–48.9)	<0.001
<b>Cardiovascular events</b>					
Number of events	627	772	1 377	166	
Rate (per 1000 person-years)	4.22 (3.89–4.55)	18.9 (17.6–20.3)	41.7 (39.5–43.8)	59.8 (51.0–68.7)	<0.001
<b>Coronary events</b>					
Number of events	328	323	588	64	
Rate (per 1000 person-years)	2.19 (1.95–2.42)	7.49 (6.68–8.31)	16.3 (15.0–17.6)	22.1 (16.8–27.5)	<0.001
<b>Stroke</b>					
Number of events	225	342	533	74	
Rate (per 1000 person-years)	1.50 (1.30–1.69)	8.06 (7.21–8.91)	15.0 (13.7–16.2)	26.4 (20.4–32.3)	<0.001

The analysis includes 17 921 study participants. Rates are given with 95% CI. P Value are for trend.

2942 fatal or nonfatal cardiovascular events, 1303 (44.3%) were because of ischemic heart disease, and 1174 (39.9%) to stroke. Total and cardiovascular mortality ran at rates of 16.3 (CI, 15.8–16.8) and 6.09 (CI, 5.78–6.41) deaths per 1000 person-years, and cardiovascular events, coronary events, and stroke at rates of 13.1 (CI, 12.6–13.5), 5.61 (CI, 5.31–5.92), and 5.08 (CI, 4.79–5.37) events per 1000 person-years with similar estimates in groups B and C (Table S6).

### Age-Specific Risk of Death or Cardiovascular Events

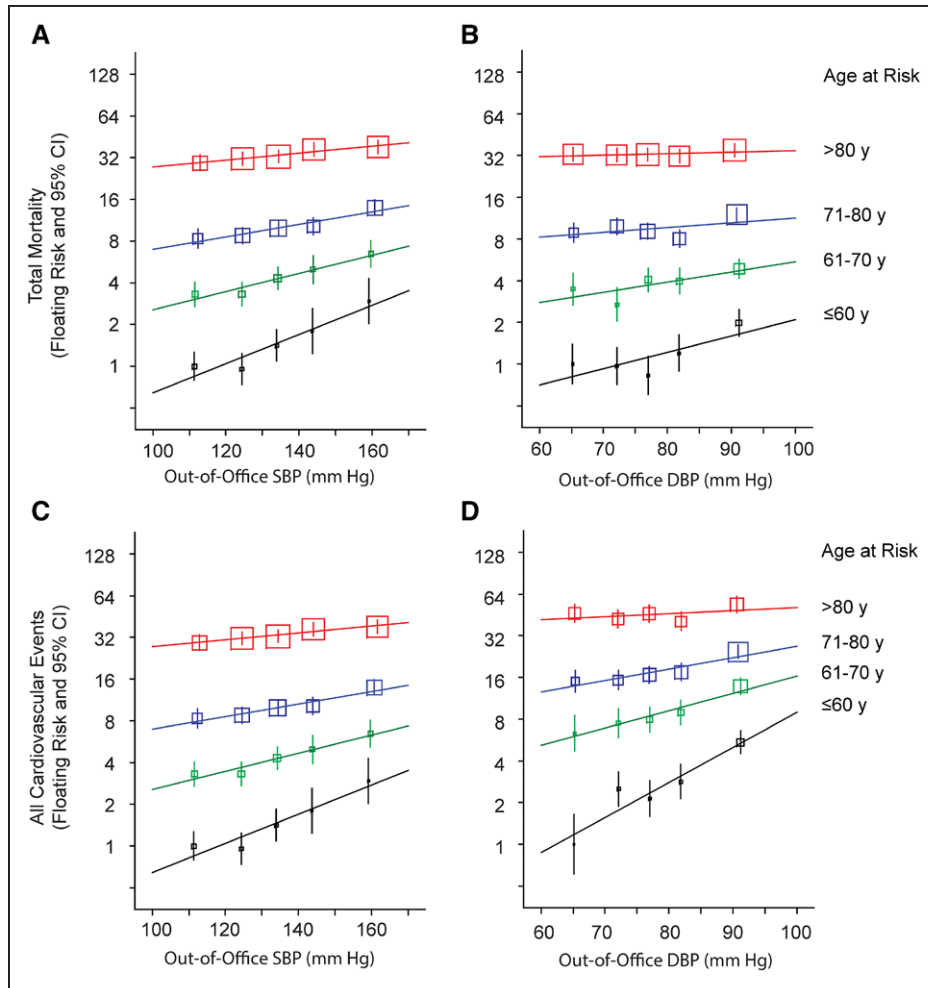
Absolute risk of all events increased across the 4 age strata (Table 2). Figure 2 shows the log-linear associations of total and cardiovascular mortality and fatal and nonfatal cardiovascular events with systolic and diastolic out-of-office BP. The 5 points plotted for each age group were well fitted by the age-specific regression lines. In all age groups, there was a graded increase in risk with higher category of systolic and diastolic out-of-office BP starting from levels below 110 mmHg systolic and below 65 mmHg diastolic. This pattern was consistent for home (group C), daytime (group B), nighttime (group D), and 24-hour (group D) systolic (Figure S1) and diastolic (Figure S2) BP. Sensitivity analyses using age at baseline instead of age at risk produced confirmatory results for both systolic and diastolic BP (Figure S3).

Hazard ratios for 20/10 mmHg increments in systolic/diastolic BP were computed for total mortality and fatal plus nonfatal cardiovascular and coronary events and stroke (Figure 3). For all events under study, relative risk as captured by the multivariable-adjusted hazard ratios increased with age,

irrespective of whether age-at-risk (Lexis expansion applied; Figure 3;  $P \leq 0.0385$ ) or age at baseline was used (Lexis expansion not applied; Figure S4;  $P \leq 0.0420$ ). This age-related increase in relative risk was largely persistent, if participants aged  $\leq 60$  years were further subdivided into 2 age bands (51–60 and  $\leq 50$  years; Figure S5), if patients with a history of cardiovascular disease ( $n=1893$  [10.6%]) or those on antihypertensive drug treatment at baseline ( $n=3721$  [20.8%]) were excluded (Figure S6), or if daytime ambulatory and home BPs were analyzed separately (Figure S7). In the 1893 participants with a history of cardiovascular disease, there was no J-curve in the association of total mortality or the composite cardiovascular end point with systolic or diastolic out-of-office BP (Figure S8).

### Analyses Stratified by Sex and Ethnicity

Across the 4 age groups, there were no sex differences ( $P \geq 0.2004$ ) in the multivariable-adjusted hazard ratios relating adverse health outcomes to systolic or diastolic out-of-office BP (Figure S9). The study population included 13 950 people of European descent (including South American) and 3971 Asians. Across the 4 age groups, there were few ethnic differences ( $P \geq 0.1148$ ) in the multivariable-adjusted hazard ratios relating adverse health outcomes to systolic or diastolic out-of-office BP (Figure S10). In the age band from 71 to 80 years (Figure S10), Asians compared with Europeans had a higher risk of cardiovascular events in relation to systolic/diastolic out-of-office BP (hazard ratios, 1.57 versus 1.22/1.34 versus 1.11;  $P \leq 0.0340$ ). Similarly, in the age band from 61 to 70 years, cardiovascular risk was also higher in Asians than in Europeans (1.78 versus 1.33/1.50 versus 1.17;  $P \leq 0.0310$ ).



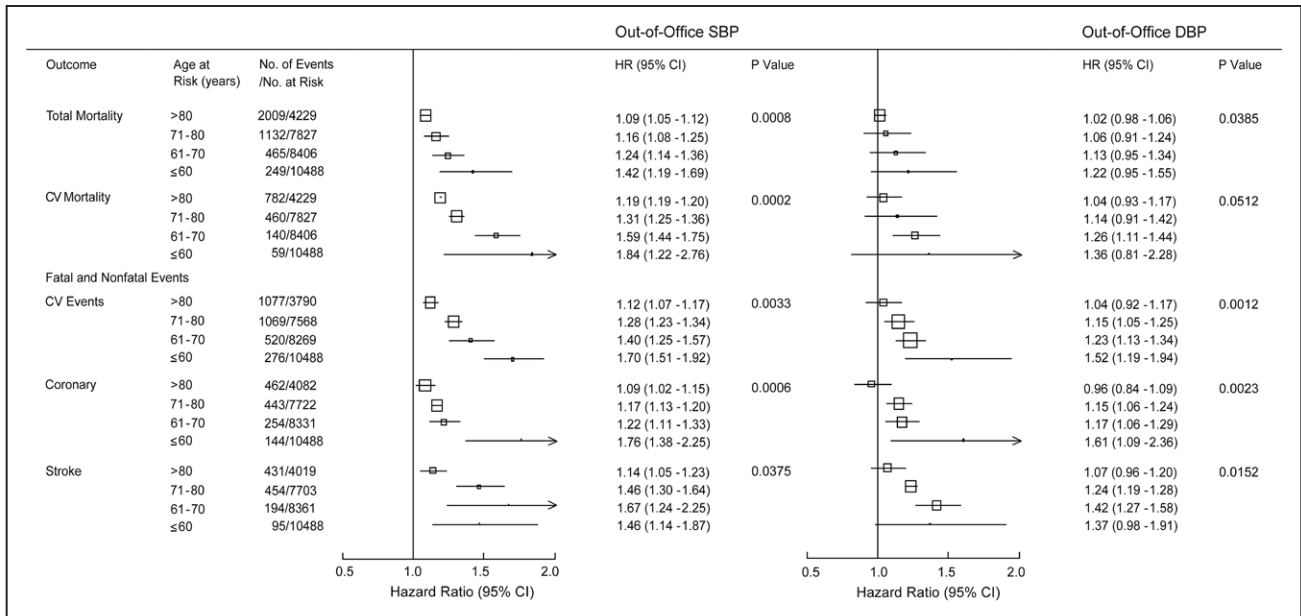
**Figure 2.** Total mortality (A and B) and cardiovascular events (C and D) by age-at-risk groups and categories of out-of-office blood pressure. Point estimates and 95% CIs for the floating absolute risks were plotted along the vertical axis. The size of the squares is proportional to the inverse the variance of each hazard ratio. Risk estimates were stratified by cohort and adjusted for sex, body mass index, serum cholesterol, smoking and drinking, antihypertensive drug treatment, and history of diabetes mellitus and cardiovascular disease. The categories plotted along the horizontal axis are <120, 120–129, 130–139, 140–149, and  $\geq 150$  mm Hg for systolic blood pressure (SBP) and <70, 70–74, 75–79, 80–84, and  $\geq 85$  mm Hg for the diastolic blood pressure (DBP). Log-linear relations were fitted for each age group for out-of-office SBP (A and C) and DBP (B and D).

## Discussion

The incidence of cardiovascular mortality and fatal combined with nonfatal cardiovascular complications showed a direct and graded relation with the level of the systolic and diastolic out-of-office BP. The risk associated with out-of-office BP log-linearly increased from levels lower than 110 mmHg systolic and 65 mmHg diastolic without any evidence for a threshold. Absolute risk associated with the out-of-office BP increased with age, but relative risk showed an opposite trend, generally increasing from the oldest to youngest age group. These findings were broadly consistent in women and men and across ethnicities.

The observation that from the oldest to the youngest age group absolute risk associated with out-of-office BP decreased, whereas over the same age span relative risk increased, is of great clinical relevance. Indeed, the management of hypertension must be viewed from a lifecourse perspective.<sup>32</sup> Treatment of high BP in young and middle-aged adults prevents subclinical target organ damage and progression to major cardiovascular complications and therefore

affects the lifecourse trajectory more than treatment of older people, who are at high absolute risk. With few exceptions, the age-specific risks associated with out-of-office BP were largely consistent in women and men and across people of European and Asian ancestry. In the age bands from 61 to 70 years and from 71 to 80 years, overall cardiovascular risk associated with out-of-office BP was higher in Asians than in Europeans. Although findings in subgroups might arise by chance, our observations potentially reflect the vast potential for better cardiovascular prevention by antihypertensive treatment in young and middle-aged women,<sup>33</sup> usually thought to be at lower risk than men as well as the possibility of countering the emerging epidemic of coronary artery disease in Asian populations, in whom stroke was traditionally the major complication of hypertension.<sup>34</sup> In fact, a lifecourse approach should not only be applied to hypertension but to all established modifiable cardiovascular risk factors as well. It should start from childhood and include a more vigorous reinforcement of lifestyle recommendations and a comprehensive management of risk indicators, over and beyond blood pressure,



**Figure 3.** Hazard ratios for out-of-office blood pressure by four age-at risk groups. The Cox models were stratified by cohort and adjusted for sex, body mass index, serum cholesterol, smoking and drinking, antihypertensive drug treatment and history of diabetes mellitus, and cardiovascular disease. Hazard ratios, given for 4 age groups, express the risk associated with increments in out-of-office blood pressure (daytime or home) of 20 mmHg systolic (SBP) or 10 mmHg diastolic (DBP). Squares representing the point estimates have a size proportional to the inverse of the variance. Horizontal lines denote the 95% CI. P are for trend across the 4 age groups. CV indicates cardiovascular.

including but not limited to dyslipidemia, impaired glucose tolerance, diabetes mellitus, active and passive exposure to tobacco smoke, early or excessive alcohol consumption, and air pollution. Such policies must pave the way to patient empowerment and a personalized patient-centered care.

Multiple studies established that out-of-office BP, measured by ambulatory<sup>4,5</sup> or home<sup>6</sup> monitoring is a better predictor of adverse health outcomes compared with office BP. In the meta-analysis of 1 million adults, a 20 mmHg lower usual systolic BP was associated with more than a 2-fold difference in vascular mortality at ages 40 to 49 years, and about one-third less vascular mortality at ages of 80 to 89 years.<sup>1</sup> In our current analysis, hazard ratios of cardiovascular mortality associated with a 20 mmHg increase in out-of-office systolic BP were 1.84 at and below 60 years of age and 1.19 above 80 years. Estimates of relative risk not only depend on the number of events and person-years accruing during a study but also on the precision with which a risk factor and the outcome under study is measured. In the aforementioned meta-analysis published in 2002,<sup>1</sup> the authors analyzed incident vascular mortality in cohorts recruited from 1949 until 1990 (median 1974; 5th–95th percentile interval, 1959–1987). BP was measured using standard or random-zero sphygmomanometers with strong preference in some cohorts for recording levels ending in zero; in 3 studies of US physicians, nurses, and health professionals, the participants reported their own BP. In the current study, we applied guideline-endorsed out-of-office BP monitoring, which provides more precise estimates of an individual's usual BP.<sup>7–9</sup> Moreover, the increasing deployment of invasive treatment modalities to remediate coronary, cerebrovascular, and peripheral arterial conditions drastically reduced cardiovascular mortality. For instance, in a multi-ethnic Asian cohort of 40623 stroke cases, the 28-day case

fatality rate fell by 17.2% from 2006 until 2012.<sup>35</sup> Along similar lines, among 77211 incident cases of hospitalized acute myocardial infarction followed up in a Scottish study, at all ages (55, 65, and 75 years) and in both sexes, the 30-day case-fatality rate approximately dropped by ≈50% from 2006 until 2015.<sup>36</sup> These observations possibly explain why the hazard ratios of cardiovascular mortality were lower in our than in Lewington's study.<sup>1</sup>

Diagnostic flow charts for the application of ambulatory and home BP monitoring have been published.<sup>7–9</sup> Both approaches of out-of-office BP measurement are mature, cost-effective,<sup>37</sup> and can be immediately rolled out on a global scale to clinical practice, thereby affecting the lives of millions of people at risk. In low-resource settings, home BP measurement is an alternative for ambulatory BP monitoring. Furthermore, out-of-office BP measurement is required for the diagnosis of masked hypertension; a condition characterized by normal in-office, but elevated out-of-office BP. It has a prevalence of ≈15% in the general population, and up to 30% in patients with diabetes mellitus.<sup>38</sup> Masked hypertension carries a risk similar to that of combined office and out-of-office hypertension.<sup>38</sup> Similarly, out-of-office BP monitoring enables avoiding needless antihypertensive treatment in patients with an elevated in-office, but normal out-of-office BP, so-called white-coat hypertension.<sup>39</sup> In individual patients, daytime and home BP may provide different, albeit still complementary, information. However, an epidemiological study, such as the current report, does not deal with the management of individual patients, but with risk assessment. We therefore chose to pool daytime and the self-measured home BP as 2 modalities of out-of-office BP. The rationale was that both types of out-of-office BP measurement are obtained during wakefulness and have the same guideline-endorsed reference

thresholds.<sup>7-9</sup> Moreover, the pooled analysis of daytime and home BP was consolidated by similar results for the home, daytime, nighttime, and 24-hour BP analyzed separately.

The present study describes for the first time the age-, sex-, and ethnicity-specific risks associated with out-of-office BP. Generalizability is one of its strong points: (1) the available database included information on close to 18 000 individuals, spanning the whole adult age range with equal representation of women and men; (2) the participants were randomly recruited from populations in 14 countries and 3 continents; (3) and the outcomes were collected over a median of 13.2 years of follow-up and encompassed both fatal and nonfatal outcomes validated against the sources available in each country. To our knowledge, only 2 population studies,<sup>40,41</sup> which complied with the selection criteria of IDACO published in 2007,<sup>10</sup> did not contribute data to the current analysis because nonfatal events accrued only after the IDACO database had been constructed<sup>40</sup> or because only aggregate data could be made available.<sup>41</sup> Notwithstanding these strengths, our study must also be interpreted within the context of its limitations. First, in all cohorts, BP was measured only at baseline. We could therefore not adjust for regression dilution bias.<sup>42</sup> Second, enrollment of the IDACO (Table S1) and IDHOCO (Table S2) population cohorts included in this participant-level meta-analysis started before statins became commonplace in cardiovascular prevention. We also did not have standardized information on the initiation of nonpharmacological and pharmacological cardiovascular preventive measures during follow-up. However, starting antihypertensive or lipid-lowering drugs or health-promoting lifestyle interventions during follow-up would not enhance but rather weaken the associations of study events with out-of-office BP and other risk factors, as measured at baseline. Third, stroke is the complication of hypertension closest associated with the BP level,<sup>34</sup> but we did not have reliable information on stroke subtypes. Fourth, all fatal and nonfatal study end points were adjudicated against the medical records held by doctors and hospitals. However, in view of the different settings of the population studies contributing to IDACO<sup>10</sup> and IDHOCO,<sup>11</sup> the possibility of some misclassification bias in the validation of events cannot be entirely excluded. Finally, Asians were under-represented among our cohorts and we had no information on Blacks of African descent or Blacks born and living in Africa, who generally are more susceptible to the complications of hypertension.<sup>43</sup> We also classified participants enrolled in South America among people of European descent, although there was some degree of indigenous admixture, in particular, in the Maracaibo Aging Study.<sup>22</sup>

## Perspectives

In this first study of the age-, sex-, and ethnicity-specific risks of death and cardiovascular complications associated with out-of-office BP, at young age, relative risk was high and absolute risk low, whereas with advancing age relative risk associated with out-of-office BP decreased and absolute risk increased. These observations underscore the need for a lifecourse approach to the management of hypertension. They highlight the necessity to start antihypertensive treatment early in young and middle-aged adults for primary prevention, in particular

in women, who compared with men have the same relative risk. In older people, BP-lowering treatment should aim at the prevention of disabling complications and extending years lived without disability.

## Acknowledgments

We gratefully acknowledge the expert clerical assistance of Vera De Leebeek and Renilde Wolfs at the University of Leuven, Belgium.

## Sources of Funding

The European Union (HEALTH-F7-305507 HOMAGE), the European Research Council (Advanced Researcher Grant 2011-294713-EPLORE and Proof-of-Concept Grant 713601-uP-ROPHET), the European Research Area Net for Cardiovascular Diseases (JTC2017-046-PROACT), and the Research Foundation Flanders, Ministry of the Flemish Community, Brussels, Belgium (G.0881.13) currently support the Studies Coordinating Centre in Leuven. The European Union (grants LSHM-CT-2006-037093 and HEALTH-F4-2007-201550) also supported the research groups in Shanghai, Kraków, Padova, and Novosibirsk. The Ohasama Study was supported by: Grants for Scientific Research (16H05243, 16H05263, 16K09472, 16K11850, 16K15359, 17H04126, 17H06533, 17K15853, 17K19930, 18K09674, 18K09904, and 18K17396) from the Ministry of Culture, Sports, Science, and Technology, Tokyo, Japan; a Grant-in-Aid for Young Scientists of Showa Pharmaceutical University H28-4; the Japan Arteriosclerosis Prevention Fund; Comprehensive Research on Cardiovascular and Lifestyle Related Diseases (H26-Junkankitou [Seisaku]-Ippan-001) and (H29-Junkankitou-Ippan-003) from the Ministry of Health, Labor, and Welfare, Tokyo, Japan; a Scheme to Revitalize Agriculture and Fisheries in Disaster Area through Deploying Highly Advanced Technology (NouEi 2-02) from the Ministry of Agriculture, Forestry and Fisheries, Japan; the Academic Contributions from Pfizer Japan Inc.; Scholarship donations from Chugai Pharmaceutical, Co, Ltd., and from Daiichi Sankyo, Co, Ltd. The Asociación Española Primera en Salud supported the research group in Montevideo. The Danish Heart Foundation (grant 01-2-9-9A-22914) and the Lundbeck Fonden (grant R32-A2740) supported the studies in Copenhagen. The JingNing study was supported by the National Natural Science Foundation of China (grants 81470533, 91639203 and 81770455), the Ministry of Science and Technology (2015AA020105-06, 2016YFC1300100 and 2018YFC1704902), Beijing, China, and by the Shanghai Commissions of Science and Technology (grants 14ZR1436200 and 15XD1503200) and the Shanghai Bureau of Health (15GWZK0802, 2017BR025 and a Grant for Leading Academics). The National Institutes of Health and the National Institute of Aging (5 R01 AG036469-05, 1R03AG054186) and FONACIT (G-97000726) supported the Maracaibo Aging Study. The Finn-Home study was supported by the Emil Aaltonen Foundation, the Paavo Nurmi Foundation, the Urmas Pekkala Foundation, and the Hospital District of South-Western Finland. Follow-up of the Kraków cohort was supported by the Foundation for Polish Science. The 19-year follow-up of the Didima study in Greece has been partially supported by an unrestricted research grant by Menarini Hellas, Argypourpolis, Greece.

## Disclosures

None.

## References

- Lewington S, Clarke R, Qizilbash N, Peto R, Collins R; Prospective Studies Collaboration. Age-specific relevance of usual blood pressure to vascular mortality: a meta-analysis of individual data for one million adults in 61 prospective studies. *Lancet*. 2002;360:1903-1913. doi: 10.1016/s0140-6736(02)11911-8
- Asia Pacific Cohort Studies Collaboration. Blood pressure and cardiovascular disease in the Asia Pacific region. *J Hypertens*. 2003;21:707-716. doi: 10.1097/01.hjh.0000052492.18130.07
- Lacey B, Lewington S, Clarke R, et al; China Kadoorie Biobank collaborative group. Age-specific association between blood pressure and



- vascular and non-vascular chronic diseases in 0.5 million adults in China: a prospective cohort study. *Lancet Glob Health*. 2018;6:e641–e649. doi: 10.1016/S2214-109X(18)30217-1
4. Hansen TW, Kikuya M, Thijs L, Björklund-Bodegård K, Kuznetsova T, Ohkubo T, Richart T, Torp-Pedersen C, Lind L, Jeppesen J, Ibsen H, Imai Y, Staessen JA; IDACO Investigators. Prognostic superiority of daytime ambulatory over conventional blood pressure in four populations: a meta-analysis of 7,030 individuals. *J Hypertens*. 2007;25:1554–1564. doi: 10.1097/HJH.0b013e3281c49da5
  5. Banegas JR, Ruilope LM, de la Sierra A, Vinyoles E, Gorostidi M, de la Cruz JJ, Ruiz-Hurtado G, Segura J, Rodríguez-Artalejo F, Williams B. Relationship between clinic and ambulatory blood-pressure measurements and mortality. *N Engl J Med*. 2018;378:1509–1520. doi: 10.1056/NEJMoa1712231
  6. Niiranen TJ, Hänninen MR, Johansson J, Reunanen A, Jula AM. Home-measured blood pressure is a stronger predictor of cardiovascular risk than office blood pressure: the Finn-Home study. *Hypertension*. 2010;55:1346–1351. doi: 10.1161/HYPERTENSIONAHA.109.149336
  7. Whelton PK, Carey RM, Aronow WS, et al. 2017 ACC/AHA/AAPA/ABC/ACPM/AGS/APHA/ASH/ASPC/NMA/PCNA guideline for the prevention, detection, evaluation, and management of high blood pressure in adults: a report of the American College of Cardiology/American Heart Association Task Force on Clinical Practice Guidelines. *Hypertension*. 2018;71:e13–e115. doi: 10.1161/HYP.0000000000000065
  8. National Institute for Health and Clinical Excellence (NICE). The Clinical Management of Primary Hypertension in Adults. Clinical Guideline 127. Methods, Evidence and Recommendations. <http://www.nice.org.uk/guidance/CG127>. 2011. Accessed September 1, 2019.
  9. Williams B, Mancia G, Spiering W, et al; List of authors/Task Force Members. 2018 Practice Guidelines for the management of arterial hypertension of the European Society of Hypertension and the European Society of Cardiology: ESH/ESC task force for the management of arterial hypertension. *J Hypertens*. 2018;36:2284–2309. doi: 10.1097/HJH.0000000000001961
  10. Thijs L, Hansen TW, Kikuya M, et al; IDACO Investigators. The International Database of Ambulatory Blood Pressure in relation to Cardiovascular Outcome (IDACO): protocol and research perspectives. *Blood Press Monit*. 2007;12:255–262.
  11. Niiranen TJ, Thijs L, Asayama K, Johansson JK, Ohkubo T, Kikuya M, Boggia J, Hozawa A, Sandoya E, Stergiou GS, Tsuji I, Jula AM, Imai Y, Staessen JA; IDHOCO Investigators. The International Database of Home blood pressure in relation to Cardiovascular Outcome (IDHOCO): moving from baseline characteristics to research perspectives. *Hypertens Res*. 2012;35:1072–1079. doi: 10.1038/hr.2012.97
  12. World Medical Association. World Medical Association Declaration of Helsinki: ethical principles for medical research involving human subjects. *JAMA*. 2013;310:2191–2194. doi: 10.1001/jama.2013.281053
  13. Hansen TW, Jeppesen J, Rasmussen S, Ibsen H, Torp-Pedersen C. Ambulatory blood pressure and mortality: a population-based study. *Hypertension*. 2005;45:499–504. doi: 10.1161/01.HYP.0000160402.39597.3b
  14. Ohkubo T, Hozawa A, Yamaguchi J, Kikuya M, Ohmori K, Michimata M, Matsuura M, Hashimoto J, Hoshi H, Araki T, Tsuji I, Satoh H, Hisamichi S, Imai Y. Prognostic significance of the nocturnal decline in blood pressure in individuals with and without high 24-h blood pressure: the Ohasama study. *J Hypertens*. 2002;20:2183–2189. doi: 10.1097/00004872-200211000-00017
  15. Staessen JA, Bieniaszewski L, O'Brien ET, Imai Y, Fagard R. An epidemiological approach to ambulatory blood pressure monitoring: the Belgian population study. *Blood Press Monit*. 1996;1:13–26.
  16. Ingelsson E, Björklund-Bodegård K, Lind L, Arnlöv J, Sundström J. Diurnal blood pressure pattern and risk of congestive heart failure. *JAMA*. 2006;295:2859–2866. doi: 10.1001/jama.295.24.2859
  17. Schettini C, Bianchi M, Nieto F, Sandoya E, Senra H. Ambulatory blood pressure: normality and comparison with other measurements. Hypertension Working Group. *Hypertension*. 1999;34(4 pt 2):818–825. doi: 10.1161/01.hyp.34.4.818
  18. Li Y, Wang JG, Gao P, Guo H, Nawrot T, Wang G, Qian Y, Staessen JA, Zhu D. Are published characteristics of the ambulatory blood pressure generalizable to rural Chinese? The JingNing population study. *Blood Press Monit*. 2005;10:125–134.
  19. Kuznetsova T, Malyutina S, Pello E, Thijs L, Nikitin Y, Staessen JA. Ambulatory blood pressure of adults in Novosibirsk, Russia: interim report on a population study. *Blood Press Monit*. 2000;5:291–296.
  20. Kuznetsova T, Staessen JA, Kawecka-Jaszcz K, Babeanu S, Casiglia E, Filipovsky J, Nachev C, Nikitin Y, Peleskã J, O'Brien E. Quality control of the blood pressure phenotype in the European Project on Genes in Hypertension. *Blood Press Monit*. 2002;7:215–224.
  21. O'Brien E, Murphy J, Tyndall A, Atkins N, Mee F, McCarthy G, Staessen J, Cox J, O'Malley K. Twenty-four-hour ambulatory blood pressure in men and women aged 17 to 80 years: the Allied Irish Bank Study. *J Hypertens*. 1991;9:355–360. doi: 10.1097/00004872-199104000-00007
  22. Maestre GE, Pino-Ramírez G, Molero AE, Silva ER, Zambrano R, Falque L, Gamero MP, Sulbarán TA. The Maracaibo Aging Study: population and methodological issues. *Neuroepidemiology*. 2002;21:194–201. doi: 10.1159/000059524
  23. Niu K, Hozawa A, Awata S, Guo H, Kuriyama S, Seki T, Ohmori-Matsuda K, Nakaya N, Ebihara S, Wang Y, Tsuji I, Nagatomi R. Home blood pressure is associated with depressive symptoms in an elderly population aged 70 years and over: a population-based, cross-sectional analysis. *Hypertens Res*. 2008;31:409–416. doi: 10.1291/hypres.31.409
  24. Stergiou GS, Baibas NM, Kalogeropoulos PG. Cardiovascular risk prediction based on home blood pressure measurement: the Didima Study. *J Hypertens*. 2007;25:1590–1596. doi: 10.1097/HJH.0b013e3281ab6c69
  25. Asayama K, Ohkubo T, Kikuya M, Metoki H, Hoshi H, Hashimoto J, Totsune K, Satoh H, Imai Y. Prediction of stroke by self-measurement of blood pressure at home versus casual screening blood pressure measurement in relation to the Joint National Committee 7 classification: the Ohasama study. *Stroke*. 2004;35:2356–2361. doi: 10.1161/01.STR.0000141679.42349.9f
  26. Li Y, Thijs L, Hansen TW, et al; International Database on Ambulatory Blood Pressure Monitoring in Relation to Cardiovascular Outcomes Investigators. Prognostic value of the morning blood pressure surge in 5645 subjects from 8 populations. *Hypertension*. 2010;55:1040–1048. doi: 10.1161/HYPERTENSIONAHA.109.137273
  27. Thijs L, Staessen J, Fagard R. Analysis of the diurnal blood pressure curve. *High Blood Press Cardiovasc Prev*. 1992;1:17–28. doi: 10.1111/jch.12003
  28. Asayama K, Thijs L, Brguljan-Hitij J, et al; International Database of Home Blood Pressure in Relation to Cardiovascular Outcome (IDHOCO) investigators. Risk stratification by self-measured home blood pressure across categories of conventional blood pressure: a participant-level meta-analysis. *PLoS Med*. 2014;11:e1001591. doi: 10.1371/journal.pmed.1001591
  29. Pitsavos C, Panagiotakos DB, Chrysoshoou C, Stefanadis C. Epidemiology of cardiovascular risk factors in Greece: aims, design and baseline characteristics of the ATTICA study. *BMC Public Health*. 2003;3:32. doi: 10.1186/1471-2458-3-32
  30. Easton DF, Peto J, Babiker AG. Floating absolute risk: an alternative to relative risk in survival and case-control analysis avoiding an arbitrary reference group. *Stat Med*. 1991;10:1025–1035. doi: 10.1002/sim.4780100703
  31. Hong LS, Lewington S. Lexis Expansion - Age-at-risk adjustment for survival analysis. 2012. <https://www.lexjansen.com/phuse/2013/sp/SP09.pdf>. Accessed September 1 2018.
  32. Olsen MH, Angell SY, Asma S, et al. A call to action and a lifecourse strategy to address the global burden of raised blood pressure on current and future generations: the Lancet Commission on hypertension. *Lancet*. 2016;388:2665–2712. doi: 10.1016/S0140-6736(16)31134-5
  33. Boggia J, Thijs L, Hansen TW, et al; International Database on Ambulatory blood pressure in relation to Cardiovascular Outcomes Investigators. Ambulatory blood pressure monitoring in 9357 subjects from 11 populations highlights missed opportunities for cardiovascular prevention in women. *Hypertension*. 2011;57:397–405. doi: 10.1161/HYPERTENSIONAHA.110.156828
  34. Staessen JA, Kuznetsova T, Stolarz K. Hypertension prevalence and stroke mortality across populations. *JAMA*. 2003;289:2420–2422. doi: 10.1001/jama.289.18.2420
  35. Tan CS, Müller-Riemenschneider F, Ng SH, Tan PZ, Chan BP, Tang KF, Ahmad A, Kong KH, Chang HM, Chow KY, Koh GC, Venketasubramanian N; Singapore Stroke Registry. Trends in stroke incidence and 28-day case fatality in a nationwide stroke registry of a multiethnic asian population. *Stroke*. 2015;46:2728–2734. doi: 10.1161/STROKEAHA.115.009797
  36. Read SH, Kerssens JJ, McAllister DA, Colhoun HM, Fischbacher CM, Lindsay RS, McCrimmon RJ, McKnight JA, Petrie JR, Sattar N, Wild SH; Scottish Diabetes Research Network Epidemiology Group. Trends in type 2 diabetes incidence and mortality in Scotland between 2004 and 2013. *Diabetologia*. 2016;59:2106–2113. doi: 10.1007/s00125-016-4054-9
  37. Lovibond K, Jowett S, Barton P, Caulfield M, Heneghan C, Hobbs FD, Hodgkinson J, Mant J, Martin U, Williams B, Wonderling D, McManus RJ. Cost-effectiveness of options for the diagnosis of high blood pressure

- in primary care: a modelling study. *Lancet*. 2011;378:1219–1230. doi: 10.1016/S0140-6736(11)61184-7
38. Franklin SS, Thijs L, Li Y, et al; International Database on Ambulatory blood pressure in Relation to Cardiovascular Outcomes Investigators. Masked hypertension in diabetes mellitus: treatment implications for clinical practice. *Hypertension*. 2013;61:964–971. doi: 10.1161/HYPERTENSIONAHA.111.00289
  39. Asayama K, Li Y, Franklin SS, Thijs L, O'Brien E, Staessen JA. Cardiovascular risk associated with white-coat hypertension: con side of the argument. *Hypertension*. 2017;70:676–682. doi: 10.1161/HYPERTENSIONAHA.117.08902
  40. Bombelli M, Toso E, Peronio M, Fodri D, Volpe M, Brambilla G, Facchetti R, Sega R, Grassi G, Mancia G. The Pamela study: main findings and perspectives. *Curr Hypertens Rep*. 2013;15:238–243. doi: 10.1007/s11906-013-0348-1
  41. Ravenell J, Shimbo D, Booth JN III, Sarpong DF, Agyemang C, Beatty Moody DL, Abdalla M, Spruill TM, Shallcross AJ, Bress AP, Muntner P, Ogedegbe G. Thresholds for ambulatory blood pressure among African Americans in the Jackson Heart Study. *Circulation*. 2017;135:2470–2480. doi: 10.1161/CIRCULATIONAHA.116.027051
  42. MacMahon S, Peto R, Cutler J, Collins R, Sorlie P, Neaton J, Abbott R, Godwin J, Dyer A, Stamler J. Blood pressure, stroke, and coronary heart disease. Part 1, Prolonged differences in blood pressure: prospective observational studies corrected for the regression dilution bias. *Lancet*. 1990;335:765–774. doi: 10.1016/0140-6736(90)90878-9
  43. Odili AN, Thijs L, Yang WY, Ogedengbe JO, Nwegbu MM, Jacobs L, Wei FF, Feng YM, Zhang ZY, Kuznetsova T, Nawrot TS, Staessen JA. Office and home blood pressures as determinants of electrocardiographic left ventricular hypertrophy among Black Nigerians compared with White Flemish. *Am J Hypertens*. 2017;30:1083–1092. doi: 10.1093/ajh/hpx114

## Novelty and Significance

### What Is New?

In a participant-level meta-analysis, we recorded out-of-office blood pressure (BP), either daytime ambulatory (n=12 624) or home (n=5297) BP in 17 921 participants enrolled from 17 populations. Subsequently, mortality and cardiovascular events were recorded. Using multivariable Cox regression, floating absolute risk was computed across 4 age bands ( $\leq 60$ , 61–70, 71–80, and  $> 80$  years) and 5 systolic or 5 diastolic BP categories.

### What Is Relevant?

- Over 236 491 person-years, 3855 people died and 2942 cardiovascular events occurred.
- From 110/65 mm Hg, risk log-linearly increased with higher out-of-office systolic/diastolic BP.
- From  $\leq 60$  to  $> 80$  years, rates per 1000 person-years increased from 4.4 to 86.3 for all-cause mortality and from 4.1 to 59.8 for cardiovascular events.

- From  $\leq 60$  to  $> 80$  years, hazard ratios per 20-mm Hg increment in systolic out-of-office BP decreased from 1.42 (1.19–1.69) to 1.09 (1.05–1.12) for all-cause mortality and from 1.70 (1.51–1.92) to 1.12 for cardiovascular events.
- These age-related trends were similar for out-of-office diastolic BP and were generally consistent in both sexes and across ethnicities.

### Summary

Adverse health outcomes were directly associated with out-of-office BP in adults. At young age, absolute risk associated with out-of-office BP was low, but relative risk high, whereas with advancing age relative risk decreased and absolute risk increased. These observations highlight the need of a lifecourse approach for the management of hypertension.